

RS30 series



Enterprise Smartphone with an Industrial Design

CipherLab has manufactured the RS30 series to satisfy the needs of the customer-facing mobile workers in field sales, field service, retail and healthcare industries. The RS30 series touch mobile computer is a rugged smart device of which the touch-centric user interface is just like any other smartphone. Additionally, the ruggedness of the RS30 series safely protects its powerful features from harsh environments. Moreover, the RS30 series is capable of operating over a shift without worrying about insufficient battery life. Simply put, the RS30 is a full function touch mobile computer which is designed with the enterprise' needs in mind.



RS30 series

Touch Mobile Computer

Touch-centric Experience with Performance Assurance

The CipherLab RS30 touch mobile computer is a rugged smartphone with industrial scanning engine. Its solid protection ensures worry-free applications in the field. The big touch screen along with Android operating system demonstrates the user interface as familiar as any personal smartphone. Equipped with versatile reader options, near field communication and other functions, the RS30 offers a rugged and intelligent solution to meet mobile workers' needs.



The Full Benefits of a Touch-centric Experience

The RS30 series touch mobile computer is a touch-centric smartphone with built-in multi-touch panel operating on the Android 4.4 operating system. This ensures minimal training for the users because the user experience would be as similar as a personal smartphone. Its high sensible touch panel supports users' touch from bare fingertips to latex gloves. The RS30 series also includes a large 4.7" display which supports more viewable data to speed up information checking and responses to customer requests. The RS30 series weighs in at only 260 grams so there are no burdens on users mobility.



Full Protection of Investments with Industrial Rugged Design

RS30 touch mobile computer is under the full protection of CipherLab's rugged designs to safeguard its powerful features. It has an IP54 rating to safely sustain operation under rain and dust in the field. The CipherLab RS30 series is capable of sustaining 1.2 m drops and 150 tumbles at 0.5 m. Users also have the choice to equip an optional protective boot which can advance the RS30's ruggedness to sustain 1.5 m drops and 500 tumbles at 0.5 m. Moreover, the operating temperature range of the RS30 is widened compared to typical smartphones so it could operate efficiently in hot or cold weathers. Its multi-touch panel is built with Corning® Gorilla® Glass 3 which has high resistance from scratches. The RS30 can be safely carried around in pockets along with coins and keys without any worries.



Protections from Potential Data Loss

The RS30 series offers reliable WiFi to ensure accurate data transmission and real time communication. It supports quick roaming and reconnection to eliminate data loss while transmitting data. The 3.8G HSPA+ wireless connectivity also provides quality data transmission in the field. Besides, the CipherLab RS30 series' backup battery with hot swap function ensures that the collected data will not be lost when the main battery is drained.



Efficient and Accurate Data Capturing

CipherLab' s RS30 series offers data capturing through CCD, laser and 2D readers to efficiently capture 1D and 2D barcodes within four walls and under sunlight. The RS30 is equipped with Near Field Communication (NFC) to enable peer to peer data communication and simplify device upgrade and management. It also supports RFID tag reading in short distances. The built-in SAM slot allows data encryption to ensure security while using NFC for payment applications.



Value-added Software for Quick and Efficient Operation

The RS30 tough mobile computer is equipped with reader configuration and button assignment that make the device setting flexible and efficient. In addition, it also includes 3rd party programming software tools in KALIPSO Mobility Application Generator and SOTI MobiControl to fully customize the RS30 to specific demands.

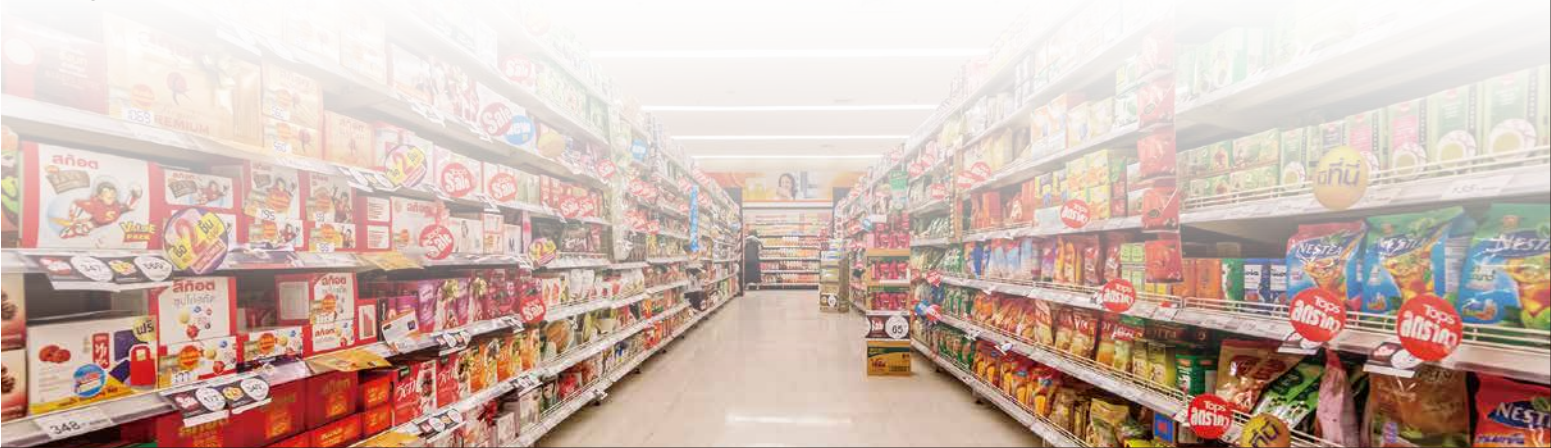


KALIPSO Mobile Application Generator for Easy and Quick Customization

A third party application generator software tool designed for Windows® and Android-based mobile computers, KALIPSO Mobile Application Generator helps users customize application needs effortlessly. With free demo programs such as inventory check, order entry, and proof-of-delivery, users could start the applications right away.

SOTI MobiControl for Improved Device Management in the Field

SOTI MobiControl enables access to a robust set of features that support remote device management without requiring the mobile devices to be brought back to the office.



RS30 series

Touch Mobile Computer



Performance	Operating system	Android 4.4
	CPU	Cortex 1.3 GHz Quad Core Processor
	Memory	8GB Flash / 1GB RAM
	Expansion	Micro SD card slot with SDHC support (up to 32GB)
	SIM / SAM	2 SIM slots and 1 SAM slot
	Operating power	Replaceable and rechargeable 3.7V 2500 mAh Li-ion battery
	Working hours ¹	10 hours
	Alert	Tri-color LEDs, vibrator, speaker
	Interface supported	USB 2.0 OTG and charging contact
Wireless communication	WWAN ²	GSM / GPRS / EDGE / WCDMA / HSDPA / HSUPA / HSPA+ GSM / GPRS / EDGE: 850 / 900 / 1800 / 1900; UMTS / HSDPA / HSUPA: 850 / 900 / 1900 / 2100
	WLAN	IEEE 802.11 b/g/n
	WLAN security	WPA (PSK), WPA2 (PSK), WEP, TKIP, AES, EAP (MD5 CHAP, MS CHAP V2, TLS, PEAP)
	WPAN	Bluetooth® Class II, V4.0, V2.1 with Enhanced Data Rate (EDR)
	Bluetooth® profile	GAP, SDP, GOEP, SPP, OPP, HID, HSP, HFP, FTP, BPP, BIP, PBAP, A2DP, AVRCP, PXP, HOGP
	GPS	GPS, integrated with A-GPS ready
Data capture	Barcode scanning	Linear imager / Laser / 2D imager
	RFID read / write	HF RFID 13.56 MHz frequency which supports ISO14443A, ISO14443B, and ISO15693 Support NFC (Peer-to-Peer, Card Reader, Card Emulation)
	Camera	Autofocus 8 megapixels with user-controllable flash
Physical characteristics	Display	4.7" qHD 540 (W) x 960 (H), exceptionally bright image with 510 NITS, transmissive IPS LCD, Corning Gorilla Glass 3
	Touch panel	Capacitive touch with fingertip (bare or latex gloved) input
	Interactive Sensor Technology	Light sensor, proximity sensor, accelerometer, e-compass
	Keypad	Dedicated scan key, 4 programmable keys, volume up and down keys, left and right trigger keys
	Audio	Speaker, dual array digital microphones with echo and noise cancellation
	Size (LxWxH)	155 x 80 x 17.3 mm / 6.1 x 3.1 x 0.68 in.
	Weight (laser including battery)	260 g / 9.2 oz. with battery
User environment	Operating temperature	-20°C to 50°C / -4°F to 122°F
	Storage temperature	-30°C to 70°C / -22°F to 158°F
	Humidity (non-condensed)	Operating 10% to 90% / Storage 5% to 95%
	Impact resistance	SGS certified 1.2 m (4 ft.) multiple drops onto concrete, 6 drops on each side / IP54 / 150 tumbles at 0.5 m With protective boot: SGS certified 1.5 m (5 ft.) multiple drops onto concrete, 6 drops on each side / IP54 / 500 tumbles at 0.5 m
	Electrostatic discharge	± 15 kV air discharge, ± 8 kV contact discharge
	EMC regulation	CE, RoHS, REACH, WEEE, ErP, RCM, NCC, FCC, JRL, TBL, CTA
Development support	CipherLab API for Android	
Application software	Reader Configuration, AppLock, Programmable Keys, Kalipso Application Generator, SOTI MobiControl, Zello, MAPS.ME	
Accessories	Charging cradle, USB snap-on cable, micro USB cable, protective boot	
Warranty	1 year	

1. Minimum 10 hours under WLAN and laser scanning per 20 seconds, LCD 50% backlight and speaker on (volume is default) at 25°C, RFID off / Bluetooth® off / IEEE 802.11 b/g/n on. The test is based on one broadcasting packet per second.
2. The mobile computer has received general telecommunication certification for data communication. Please check with your local carrier for the optimum operating efficiency.



RS30 series



Enterprise Smartphone with an Industrial Design

CipherLab has manufactured the RS30 series to satisfy the needs of the customer-facing mobile workers in field sales, field service, retail and healthcare industries. The RS30 series touch mobile computer is a rugged smart device of which the touch-centric user interface is just like any other smartphone. Additionally, the ruggedness of the RS30 series safely protects its powerful features from harsh environments. Moreover, the RS30 series is capable of operating over a shift without worrying about insufficient battery life. Simply put, the RS30 is a full function touch mobile computer which is designed with the enterprise' needs in mind.



RS30 series

Touch Mobile Computer

Touch-centric Experience with Performance Assurance

The CipherLab RS30 touch mobile computer is a rugged smartphone with industrial scanning engine. Its solid protection ensures worry-free applications in the field. The big touch screen along with Android operating system demonstrates the user interface as familiar as any personal smartphone. Equipped with versatile reader options, near field communication and other functions, the RS30 offers a rugged and intelligent solution to meet mobile workers' needs.



The Full Benefits of a Touch-centric Experience

The RS30 series touch mobile computer is a touch-centric smartphone with built-in multi-touch panel operating on the Android 4.4 operating system. This ensures minimal training for the users because the user experience would be as similar as a personal smartphone. Its high sensible touch panel supports users' touch from bare fingertips to latex gloves. The RS30 series also includes a large 4.7" display which supports more viewable data to speed up information checking and responses to customer requests. The RS30 series weighs in at only 260 grams so there are no burdens on users mobility.



Full Protection of Investments with Industrial Rugged Design

RS30 touch mobile computer is under the full protection of CipherLab's rugged designs to safeguard its powerful features. It has an IP54 rating to safely sustain operation under rain and dust in the field. The CipherLab RS30 series is capable of sustaining 1.2 m drops and 150 tumbles at 0.5 m. Users also have the choice to equip an optional protective boot which can advance the RS30's ruggedness to sustain 1.5 m drops and 500 tumbles at 0.5 m. Moreover, the operating temperature range of the RS30 is widened compared to typical smartphones so it could operate efficiently in hot or cold weathers. Its multi-touch panel is built with Corning® Gorilla® Glass 3 which has high resistance from scratches. The RS30 can be safely carried around in pockets along with coins and keys without any worries.



Protections from Potential Data Loss

The RS30 series offers reliable WiFi to ensure accurate data transmission and real time communication. It supports quick roaming and reconnection to eliminate data loss while transmitting data. The 3.8G HSPA+ wireless connectivity also provides quality data transmission in the field. Besides, the CipherLab RS30 series' backup battery with hot swap function ensures that the collected data will not be lost when the main battery is drained.



Efficient and Accurate Data Capturing

CipherLab' s RS30 series offers data capturing through CCD, laser and 2D readers to efficiently capture 1D and 2D barcodes within four walls and under sunlight. The RS30 is equipped with Near Field Communication (NFC) to enable peer to peer data communication and simplify device upgrade and management. It also supports RFID tag reading in short distances. The built-in SAM slot allows data encryption to ensure security while using NFC for payment applications.



Value-added Software for Quick and Efficient Operation

The RS30 tough mobile computer is equipped with reader configuration and button assignment that make the device setting flexible and efficient. In addition, it also includes 3rd party programming software tools in KALIPSO Mobility Application Generator and SOTI MobiControl to fully customize the RS30 to specific demands.

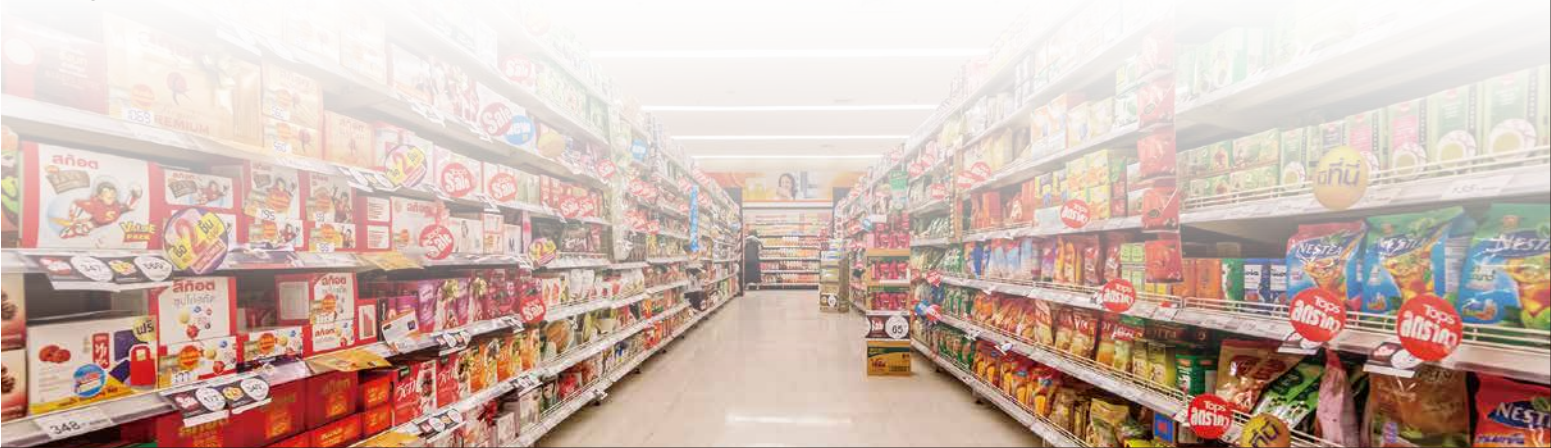


KALIPSO Mobile Application Generator for Easy and Quick Customization

A third party application generator software tool designed for Windows® and Android-based mobile computers, KALIPSO Mobile Application Generator helps users customize application needs effortlessly. With free demo programs such as inventory check, order entry, and proof-of-delivery, users could start the applications right away.

SOTI MobiControl for Improved Device Management in the Field

SOTI MobiControl enables access to a robust set of features that support remote device management without requiring the mobile devices to be brought back to the office.



RS30 series

Touch Mobile Computer



Performance	Operating system	Android 4.4
	CPU	Cortex 1.3 GHz Quad Core Processor
	Memory	8GB Flash / 1GB RAM
	Expansion	Micro SD card slot with SDHC support (up to 32GB)
	SIM / SAM	2 SIM slots and 1 SAM slot
	Operating power	Replaceable and rechargeable 3.7V 2500 mAh Li-ion battery
	Working hours ¹	10 hours
	Alert	Tri-color LEDs, vibrator, speaker
	Interface supported	USB 2.0 OTG and charging contact
Wireless communication	WWAN ²	GSM / GPRS / EDGE / WCDMA / HSDPA / HSUPA / HSPA+ GSM / GPRS / EDGE: 850 / 900 / 1800 / 1900; UMTS / HSDPA / HSUPA: 850 / 900 / 1900 / 2100
	WLAN	IEEE 802.11 b/g/n
	WLAN security	WPA (PSK), WPA2 (PSK), WEP, TKIP, AES, EAP (MD5 CHAP, MS CHAP V2, TLS, PEAP)
	WPAN	Bluetooth® Class II, V4.0, V2.1 with Enhanced Data Rate (EDR)
	Bluetooth® profile	GAP, SDP, GOEP, SPP, OPP, HID, HSP, HFP, FTP, BPP, BIP, PBAP, A2DP, AVRCP, PXP, HOGP
	GPS	GPS, integrated with A-GPS ready
Data capture	Barcode scanning	Linear imager / Laser / 2D imager
	RFID read / write	HF RFID 13.56 MHz frequency which supports ISO14443A, ISO14443B, and ISO15693 Support NFC (Peer-to-Peer, Card Reader, Card Emulation)
	Camera	Autofocus 8 megapixels with user-controllable flash
Physical characteristics	Display	4.7" qHD 540 (W) x 960 (H), exceptionally bright image with 510 NITS, transmissive IPS LCD, Corning Gorilla Glass 3
	Touch panel	Capacitive touch with fingertip (bare or latex gloved) input
	Interactive Sensor Technology	Light sensor, proximity sensor, accelerometer, e-compass
	Keypad	Dedicated scan key, 4 programmable keys, volume up and down keys, left and right trigger keys
	Audio	Speaker, dual array digital microphones with echo and noise cancellation
	Size (LxWxH)	155 x 80 x 17.3 mm / 6.1 x 3.1 x 0.68 in.
	Weight (laser including battery)	260 g / 9.2 oz. with battery
User environment	Operating temperature	-20°C to 50°C / -4°F to 122°F
	Storage temperature	-30°C to 70°C / -22°F to 158°F
	Humidity (non-condensed)	Operating 10% to 90% / Storage 5% to 95%
	Impact resistance	SGS certified 1.2 m (4 ft.) multiple drops onto concrete, 6 drops on each side / IP54 / 150 tumbles at 0.5 m With protective boot: SGS certified 1.5 m (5 ft.) multiple drops onto concrete, 6 drops on each side / IP54 / 500 tumbles at 0.5 m
	Electrostatic discharge	± 15 kV air discharge, ± 8 kV contact discharge
	EMC regulation	CE, RoHS, REACH, WEEE, ErP, RCM, NCC, FCC, JRL, TBL, CTA
Development support	CipherLab API for Android	
Application software	Reader Configuration, AppLock, Programmable Keys, Kalipso Application Generator, SOTI MobiControl, Zello, MAPS.ME	
Accessories	Charging cradle, USB snap-on cable, micro USB cable, protective boot	
Warranty	1 year	

1. Minimum 10 hours under WLAN and laser scanning per 20 seconds, LCD 50% backlight and speaker on (volume is default) at 25°C, RFID off / Bluetooth® off / IEEE 802.11 b/g/n on. The test is based on one broadcasting packet per second.
2. The mobile computer has received general telecommunication certification for data communication. Please check with your local carrier for the optimum operating efficiency.



Legacy Technology Services

We Rent & Sell All Types Of Barcode Equipment

Call now to talk to an expert

866-271-9891

www.LegacyGlobal.com

Some brands we carry



MOTOROLA

Intermec

DATALOGIC™

Honeywell

EQUINOX
PAYMENTS



About us

- Legacy Technology Services is a leading nationwide provider of mobile computing, barcode, printers and point of sale equipment and services.
- For over a decade, thousands of clients across North America have trusted us to provide equipment from leading manufacturers backed by the services to support them.

Latest Hardware from top manufacturers

- Legacy handles virtually every major manufacturer of mobile computing, barcoding and point of sale equipment.

Expert Repair and Maintenance services

- Legacy is one of the best repair facilities in North America

Discontinued product sourcing

- They don't make it anymore? Our inventory also includes manufacturer close-outs and discontinued equipment to support our clients legacy infrastructure.

Trade-in and Disposal services

- That old equipment laying around your facility may still have some value. Legacy routinely purchases equipment from our clients around the globe.
 - Data destruction
 - Hardware disposal
 - Auditing services

Dedicated client account team

- Dedicated, highly trained account managers are here to answer all your questions and provide top notch service.

Equipment rental services

- Sometimes renting is a better solution, Legacy's huge rental inventory provides the equipment you need for temporary needs and projects.



Legacy, Inc.

160 West Road,
Ellington, CT 06029

Toll Free: 866-271-9891

Fax: 888-522-4684